

# Barque

Marina Village Apartments Port Coogee



## Type G

**Floors** 1, 2, 3, 4

**Apartment No.** 11, 25, 39, 47

**Bedrooms** 2

**Bathrooms** 1

**Car Bays** 1 or 2

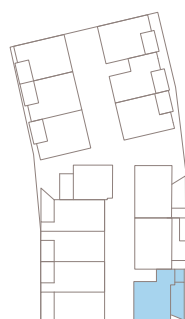
Floor Area **70m<sup>2</sup>**

Balcony Area **16m<sup>2</sup>**

Store Room Area **4m<sup>2</sup>**

### General Notes:

- Variations from strata plan may apply
- Furniture is indicative only
- Shape and configuration of balconies, doors, windows, condensers and ducts may differ from those illustrated
- Areas of apartment given are based on architectural measurements. This varies from Strata areas as it is a different method of measuring the apartment.



Floors 1-4

Please Note: Plans are not to scale

